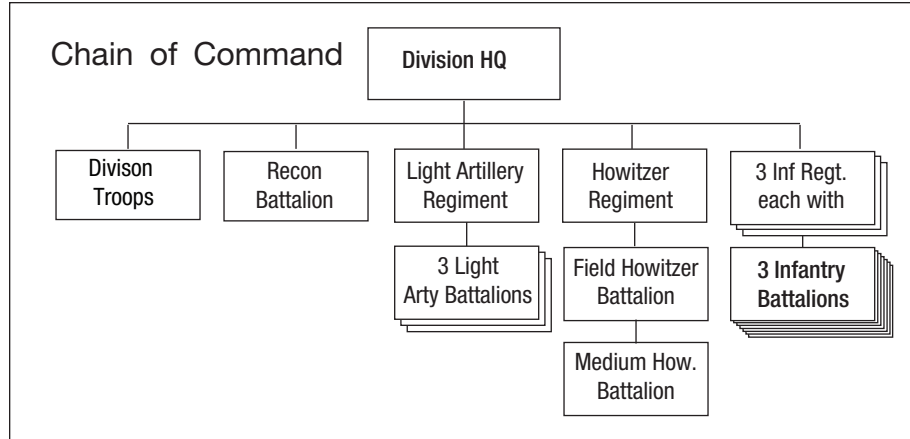


FRENCH REGULAR INFANTRY DIVISION, 1939-40

Troop Quality: Experienced
 (Colonials: veteran)
Morale: 8
 (Colonials and North Africans: 9)



Division Troops	
Headquarters	1 command stand
	1 car
Headquarters Company	1 staff radio truck
Divisional Antitank Company	1 mounted command infantry stand
	3 25L72 AT guns and crews
	3 limbers
Divisional Antiaircraft Company	1 mounted command infantry stand
	3 20L60 AA guns and crews
	3 limbers
2 Divisional Engineer Companies, each	1 command engineer stand
	2 engineer stands
Pioneer Infantry Company	1 command engineer stand
	1 engineer flamethrower stand

Reconnaissance Battalion	
Headquarters	1 command stand
	1 car
Headquarters and Weapons Squadron	1 MMG stand
	1 HMG stand
	25L72 AT gun and crew
	3 light trucks
Cavalry Squadron	1 command cavalry stand
	1 cavalry stand
	1 recon cavalry stand
Motorcycle Squadron	1 motorcycle command infantry stand
	1 motorcycle infantry stand
	1 recon motorcycle infantry stand

Light Artillery Regiment	
Headquarters	1 command stand
	1 car
Headquarters Battery	1 <i>supply wagon</i>
Antitank Battery	1 command infantry stand
	1 47L53 AT gun and crew
	2 light trucks

3 Light Artillery Battalions, each with	
Headquarters	1 mounted command observation stand
Headquarters Battery	1 <i>supply wagon</i>
3 Firing Batteries, each	1 mounted command infantry stand
	1 76L36 field gun and crew (ds)
	1 limber

FRENCH REGULAR INFANTRY DIVISION, 1939-40

Howitzer Regiment	
Headquarters	1 command stand
	1 car
Headquarters Battery	1 <i>supply wagon</i>

Field Howitzer Battalion	
Headquarters	1 mounted command observation stand
Headquarters Battery	1 <i>supply wagon</i>
3 Firing Batteries, each	1 mounted command infantry stand
	1 105L19 howitzer and crew (ds)
	1 limber

Medium Howitzer Battalion	
Headquarters	1 mounted command observation stand
Headquarters Battery	1 <i>supply wagon</i>
3 Firing Batteries, each	1 mounted command infantry stand
	1 155L15 howitzer and crew
	1 limber

3 Infantry Regiments, each with	
Headquarters	1 command stand
	1 car
Headquarters Company	1 staff telephone wagon
	1 <i>supply wagon</i>
Regimental Weapons Company	1 mounted command infantry stand
	2 25L72 AT guns and crews
	2 limbers

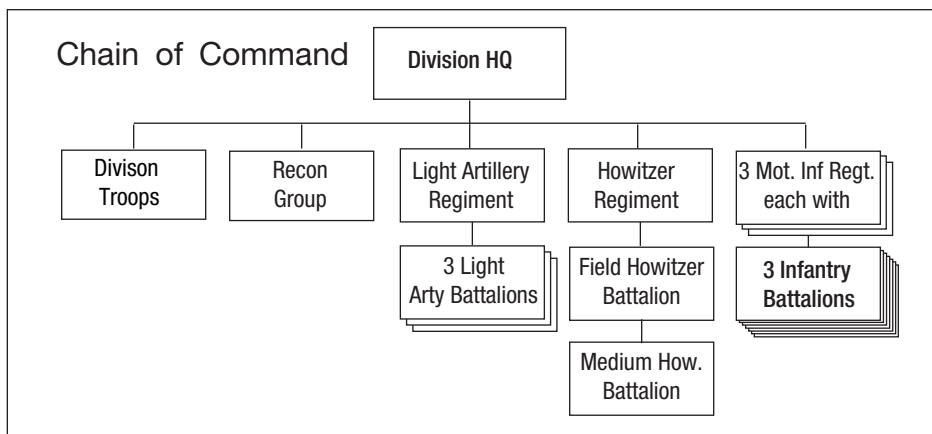
3 Infantry Battalions, each with	
Headquarters	1 command stand
Headquarters and Machinegun Company	4 MMG stands
	1 81mm mortar stand (battalion gun)
3 Infantry Companies, each	1 command infantry stand
	3 infantry stands

Notes:

- 1) *Antitank Guns:* In early 1940, replace one 25L72 AT gun in the divisional antitank company with one 47L53 AT gun.
- 2) *Organization:* There were a total of 27 regular infantry divisions in 1940: ten metropolitan, ten North African, and seven colonial.
- 3) The ten North African infantry divisions were organized as shown above but with one infantry stand removed from each infantry company.
- 4) The seven colonial infantry divisions were organized as shown above with the following exceptions:
 - i) *Divisional Antitank Company:* Replace the limbers with light trucks and add an additional truck for the command stand.
 - ii) *Infantry Battalion:* Add a car and a patrol stand to each infantry battalion headquarters.
 - iii) *Medium artillery Regiment:* Delete the field howitzer battalion.

FRENCH MOTORIZED INFANTRY DIVISION, 1939-40

Troop Quality: Experienced Morale: 8



Division Troops	
Headquarters	1 command stand
	1 car
Headquarters Company	1 staff radio truck
Divisional Antitank Company	1 command infantry stand
	3 25L72 AT guns and crews
	4 light trucks
Divisional Antiaircraft Company	1 command infantry stand
	3 20L60 AA guns and crws
	4 light trucks
2 Divisional Engineer Companies, each	1 command engineer stand
	1 light truck
	2 engineer stands
	1 medium truck
Pioneer Infantry Company	1 command engineer stand
	1 engineer flamethrower stand
	1 medium truck

Reconnaissance Group	
Headquarters	1 command stand
	1 car
Headquarters and Weapons Squadron	1 MMG stand
	1 HMG stand
	25L72 AT gun and crew
	3 light trucks
2 Motorcycle Squadrons, each	1 motorcycle command infantry stand
	1 motorcycle infantry stand
	1 recon motorcycle infantry stand
Armored Car Squadron	1 command armored car
	1 recon armored car
	1 armored car
Tank Squadron	1 command H35 or AMR tank
	4 H35 or 3 AMR tanks

Light Artillery Regiment	
Headquarters	1 command stand
Headquarters Battery	1 car
	1 <i>supply truck</i>
Antitank Battery	1 command infantry stand
	1 47L53 AT gun and crew
	2 light trucks

3 Light Artillery Battalions, each with	
Headquarters	1 command observation stand
	1 car
Headquarters Battery	1 <i>supply truck</i>
3 Firing Batteries, each	1 command infantry stand
	1 light truck
	1 76L36 field gun and crew (ds)
	1 medium truck

FRENCH MOTORIZED INFANTRY DIVISION, 1939-40

Howitzer Regiment	
Headquarters	1 command stand
	1 car
	1 <i>supply truck</i>

Field Howitzer Battalion	
Headquarters	1 command observation stand
	1 car
Headquarters Battery	1 <i>supply truck</i>
3 Firing Batteries, each	1 command infantry stand
	1 light truck
	1 105L19 howitzer and crew (ds)
	1 medium truck

Medium Howitzer Battalion	
Headquarters	1 command observation stand
	1 car
Headquarters Battery	1 <i>supply truck</i>
3 Firing Batteries, each	1 command infantry stand
	1 light truck
	1 155L15 howitzer and crew (ds)
	1 medium truck

3 Motorized Infantry Regiments, each with	
Headquarters	1 command stand
	1 car
Headquarters Company	1 staff radio truck
	1 <i>supply truck</i>
Regimental Weapons Company	1 mounted command infantry stand
	2 25L72 AT guns and crews
	3 light trucks

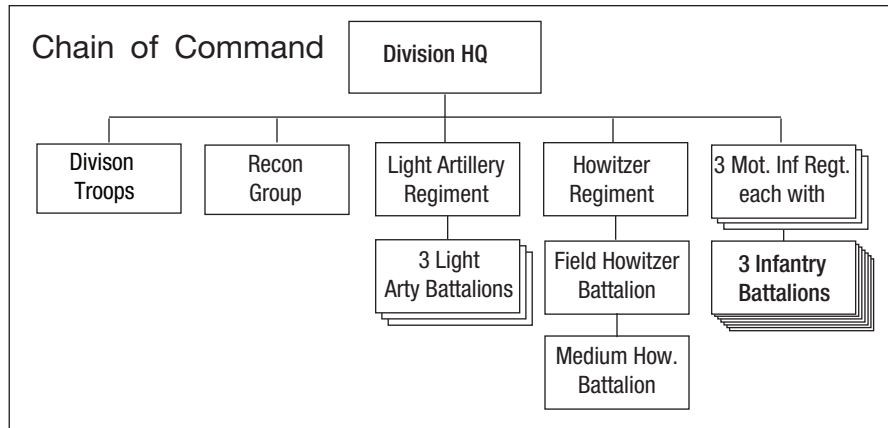
3 Infantry Battalions, each with	
Headquarters	1 command stand
	1 car
Headquarters and Machinegun Company	4 MMG stands
	1 81mm mortar stand (battalion gun)
	3 medium trucks
3 Infantry Companies, each	1 command infantry stand
	3 infantry stands
	2 medium trucks

Notes

1. *AT Guns:* In early 1940, replace one 25L72 AT gun in the divisional antitank company with one 47L53 AT gun.
2. *Tanks:* Two of the seven French motorized divisions had H-35 tanks in their reconnaissance battalions; the others had AMRs.
3. *Armored Cars:* Armored cars were mostly AMD 35s, with a few AMD 178s.

FRENCH "A" RESERVE INFANTRY DIVISION, 1939-40

Troop Quality: Regular Morale: 7



Division Troops	
Headquarters	1 command stand
	1 car
Headquarters Company	1 staff telephone wagon
Divisional Antitank Company	1 mounted command infantry stand
	2 25L72 AT guns and crews
	2 limbers
Divisional Antiaircraft Company	1 mounted command infantry stand
	1 20L60 AA gun and crew
	1 limber
2 Divisional Engineer Companies, each	1 command engineer stand
	2 engineer stands
Pioneer Infantry Company	1 command engineer stand
	1 engineer flamethrower stand

Reconnaissance Battalion	
Headquarters	1 command stand
	1 car
Headquarters and Weapons Squadron	1 MMG stand
	1 HMG stand
	25L72 AT gun and crew
	3 light trucks
Cavalry Squadron	1 command cavalry stand
	1 recon cavalry stand
	1 cavalry stand
Motorcycle Squadron	1 motorcycle command infantry stand
	1 recon motorcycle infantry stand
	1 motorcycle infantry stand

Light Artillery Regiment	
Headquarters	1 command stand
	1 car
Headquarters Battery	1 <i>supply wagon</i>
Antitank Battery	1 command infantry stand
	1 75L36 field gun and crew (ds)
	1 medium truck

3 Light Artillery Battalions, each	
Headquarters	1 mounted command observation stand
Headquarters Battery	1 <i>supply wagon</i>
3 Firing Batteries, each	1 mounted command infantry stand
	1 76L36 field gun and crew (ds)
	1 limber

FRENCH "A" RESERVE INFANTRY DIVISION, 1939-40

Howitzer Regiment	
Headquarters	1 command stand
	1 car
Headquarters Battery	1 <i>supply wagon</i>

Field Howitzer Battalion	
Headquarters	1 mounted command observation stand
Headquarters Battery	1 <i>supply wagon</i>
3 Firing Batteries, each	1 mounted command infantry stand
	1 105L19 howitzer and crew (ds)
	1 limber

Medium Howitzer Battalion	
Headquarters	1 mounted command observation stand
Headquarters Battery	1 <i>supply wagon</i>
3 Firing Batteries, each	1 mounted command infantry stand
	1 155L15 howitzer and crew
	1 limber

3 Infantry Regiments, each with	
Headquarters	1 command stand
	1 car
Headquarters and Weapons Company	1 staff telephone wagon
	1 25L72 AT gun and crew
	1 limber
	1 <i>supply wagon</i>

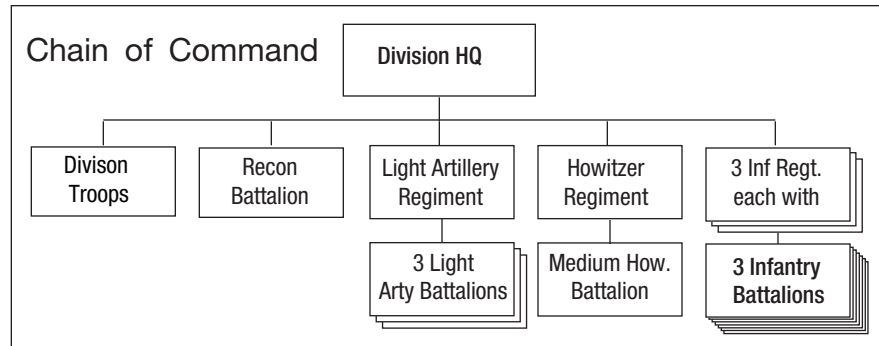
3 Infantry Battalions, each with	
Headquarters	1 command stand
Headquarters and Machinegun Company	4 MMG stands
	1 81mm mortar stand (battalion gun)
3 Infantry Companies, each	1 command infantry stand
	3 infantry stands

Notes

1. *AT Guns:* In early 1940, replace one 25L72 AT gun in the divisional antitank company with one 47L53 AT gun. In early 1940, replace the 75L36 gun with a 47L53 AT gun in the antitank battery of the light artillery regiment. (Also replace the double stand gun crew and medium truck with a single stand gun crew and light truck.)
2. *AA Batteries:* Only 13 of the 17 "A" Reserve Infantry Divisions had a divisional AA battery.

FRENCH "B" RESERVE INFANTRY DIVISION, 1939-40

Troop Quality: Trained Morale: 6



Division Troops	
Headquarters	1 command stand
	1 car
Headquarters Company	1 staff telephone wagon
Divisional Antitank Company	1 mounted command infantry stand
	1 25L72 AT gun and crew
	1 limber
2 Divisional Engineer Companies, each	1 command engineer stand
	2 engineer stands
Pioneer Infantry Company	1 command engineer stand
	1 engineer flamethrower stand

Reconnaissance Battalion	
Headquarters	1 command stand
	1 car
Headquarters and Weapons Squadron	1 MMG stand
	1 HMG stand
	25L72 AT gun and crew 3 light trucks
Cavalry Squadron	1 command cavalry stand
	1 recon cavalry stands
Motorcycle Squadron	1 motorcycle command infantry stand
	1 recon motorcycle infantry stands

Light Artillery Regiment	
Headquarters	1 command stand
	1 car
Headquarters Battery	1 <i>supply wagon</i>
Antitank Battery	1 command infantry stand
	1 75L36 field gun and crew (ds)
	1 medium truck

Howitzer Regiment	
Headquarters	1 command stand
	1 car
Headquarters Battery	1 <i>supply wagon</i>

3 Light Artillery Battalions, each	
Headquarters	1 mounted command observation stand
Headquarters Battery	1 <i>supply wagon</i>
3 Firing Batteries, each	1 mounted command infantry stand
	1 76L36 field gun and crew (ds)
	1 limber

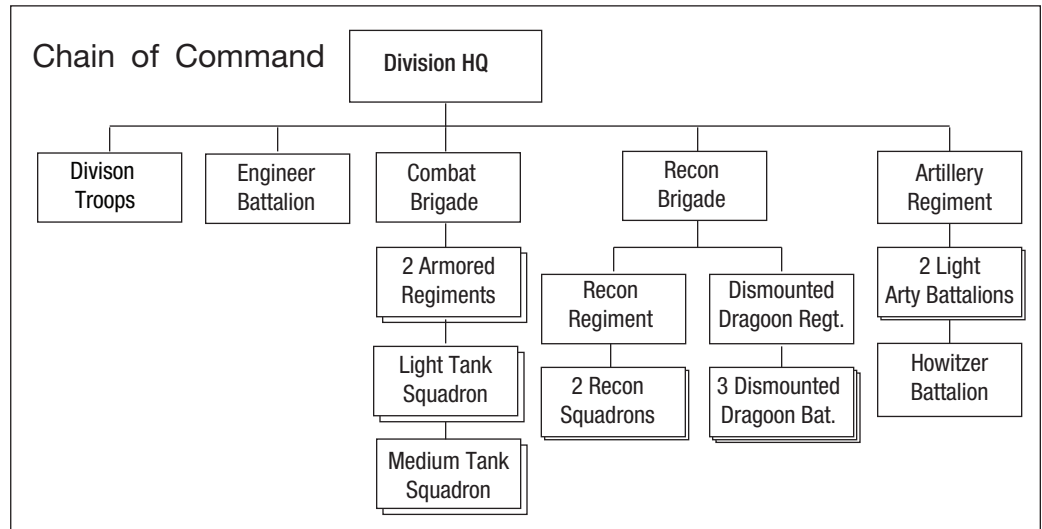
Medium Howitzer Battalion	
Headquarters	1 mounted command observation stand
Headquarters Battery	1 <i>supply wagon</i>
3 Firing Batteries, each	1 mounted command infantry stand
	1 155L15 howitzer and crew
	1 limber

3 Infantry Regiments, each with	
Headquarters	1 command stand
	1 car
Headquarters Company	1 staff telephone wagon
	1 <i>supply wagon</i>

3 Infantry Battalions, each with	
Headquarters	1 command stand
Headquarters and Machinegun Company	2 MMG stands
	1 81mm mortar stand (battalion gun)
3 Infantry Companies, each	1 command infantry stand
	2 infantry stands

FRENCH LIGHT MECHANIZED DIVISION (DIVISION LEGERE MECHANIQUE, OR DLM), 1939-40

Troop Quality: Experienced
Morale: 8



Division Troops	
Headquarters	1 command stand
	1 car
Headquarters Company	1 staff radio truck

Engineer Battalion	
Headquarters	1 command stand
	1 car
2 Companies, each	1 command engineer stand
	1 light truck
	2 engineer stands
	1 medium truck

Combat Brigade	
Headquarters	1 command H35 tank
Headquarters Company	1 staff radio truck
	1 medium supply truck

2 Armored Regiments, each	
Headquarters	1 command H35 tank
Headquarters Company	1 medium supply truck

Light Tank Squadron (Battalion)	
Headquarters	1 command H35 tank (joint command)
3 Companies, each	1 command H35 tank (joint command)
	2 H35 tanks

Medium Tank Squadron (Battalion)	
Headquarters	1 command S35 tank (joint command)
3 Companies, each	1 command S35 tank (joint command)
	1 S35 tank

Artillery Regiment	
Headquarters	1 command stand
	1 car
Headquarters Battery	1 medium supply truck
Antitank Battery	1 command infantry stand
	2 47L53 AT guns and crews
	3 light trucks

2 Light Artillery Battalions, each	
Headquarters	1 command observation stand
	1 car
Headquarters Battery	1 medium supply truck
3 Firing Batteries, each	1 command infantry stand
	1 light truck
	1 75L36 gun and crew (ds)
	1 medium truck

Howitzer Battalion	
Headquarters	1 command observation stand
	1 car
Headquarters Battery	1 medium supply truck
3 Firing Batteries, each	1 command infantry stand
	1 light truck
	1 105L19 howitzer and crew (ds)
	1 medium truck

FRENCH LIGHT MECHANIZED DIVISION (DIVISION LEGERE MECHANIQUE, OR DLM), 1939-40

Reconnaissance Brigade

Brigade Troops	
Headquarters	1 command stand
	1 car
Headquarters Company	1 staff radio truck
	1 <i>medium supply truck</i>

Reconnaissance Regiment	
Headquarters	1 command armored car

2 Reconnaissance Squadrons (Battalions), each	
Headquarters	1 command armored car
Armored Car Company	1 command armored car
	1 recon armored car
	2 armored cars
Motorcycle Company	1 command motorcycle infantry stand
	1 recon motorcycle infantry stand
	1 motorcycle infantry stand

Dismounted Dragoon Regiment	
Headquarters	1 command stand
	1 car
Headquarters Company	1 <i>medium supply truck</i>

3 Dismounted Dragoon Battalions	
Headquarters	1 command stand
	1 car
Headquarters and Weapons Company	2 MMG stands
	1 81mm mortar stand (ds)
	2 medium trucks
	1 25L72 AT gun and crew
Armored Company	1 light truck
	1 command AMR (joint command)
Motorcycle Company	4 AMR
	1 command motorcycle infantry stand
2 Infantry Companies, each	2 motorcycle infantry stands
	1 command infantry stand
	1 infantry stand
	1 MMG stand
	3 light trucks

Notes

- There were a total of three DLMs (1st, 2nd, and 3rd) which consisted of the following maneuver regiments:
 - 1st DLM:* 4th Cuirassier (armored), 18th Dragoons (armored), 6th Cuirassier (reconnaissance), 4th Dragoons (dismounted).
 - 2nd DLM:* 13th Dragoons (armored), 29th Dragoons (armored), 8th Cuirassier (reconnaissance), 1st Dragoons (dismounted).
 - 3rd DLM:* 1st Cuirassier (armored), 2nd Cuirassier (armored), 12th Cuirassier (reconnaissance), 11th Dragoons (dismounted).
- H39 Tanks:* One armored regiment (the 1st Cuirassier) of the 3rd DLM was equipped with H39 tanks in place of H35s.

FRENCH LIGHT DIVISION (DIVISION LEGERE), 1940

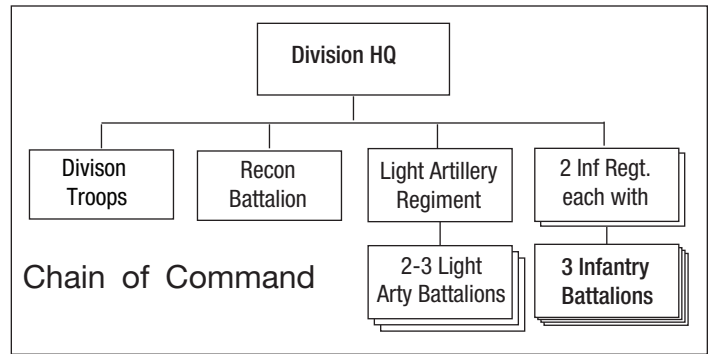
Troop Quality: Regular Morale: 7

Headquarters Troops	
Headquarters	1 command stand
	1 car
Headquarters Company	1 staff radio truck
Divisional AA Company	1 command infantry stand
	2 25L72 AA guns and crews
	3 light trucks
Divisional Engineer Company	1 command engineer stand
	2 engineer stands
	1 <i>supply wagon</i>
Divisional Infantry Engineer Company	1 command engineer stand
	1 engineer/flamethrower stand
Divisional Infantry AT Company	1 mounted command infantry stand
	2 25L72 AT guns and crews
	2 limbers

Divisional Recon Battalion	
Headquarters	1 command stand
	1 car
Headquarters and Weapons Squadron	1 MMG stand
	1 HMG stand
	1 25L72 AT gun and crew
	3 light trucks
Horse Squadron	1 cavalry command stand
	1 cavalry recon stand
	1 cavalry stand
Motorcycle Squadron	1 command motorcycle infantry stand
	1 recon motorcycle infantry stand
	1 motorcycle infantry stand

Light Artillery Regiment	
Headquarters	1 command stand
	1 car
Headquarters Battery	1 <i>supply wagon</i>
Artillery AT Company	1 command infantry stand
	1 47L53 AT gun and crew
	1 light truck

2-3 Light Artillery Battalions	
Headquarters	1 mounted command observation stand
Headquarters Battery	1 <i>supply wagon</i>
3 Batteries, each	1 mounted command infantry stand
	1 75L36 field gun and crew
	1 limber



2 Infantry Regiments, each with	
Headquarters	1 command stand
	1 car
Headquarters and Weapons Company	1 25L72 AT gun and crew
	1 limber
	1 <i>supply wagon</i>

3 Infantry Battalions, each with	
Headquarters	1 command stand
Headquarters and Machine Gun Company	1 81mm mortar stand (battalion gun)
	2 MMG stands
3 Infantry Companies, each	1 command infantry stand
	3 infantry stands

Notes

- Nomenclature:** These divisions were numbered as the 3rd, 17th, 59th, 235th, 236th, 237th, 238th, 239th, 240th, and 241st Light Infantry Divisions.
- Organization:** Formed from the remains of other units, most of the above were not at full strength when completed. The 17th, 235th, 238th, and 239th lacked Infantry engineer companies. The 17th, 240th, and 241st lacked AA Companies. In addition, the 240th lacked an infantry AT Company, while the 239th did not have a recon battalion.

FRENCH ARMORED DIVISION

(DIVISION CUIRASSIER DE RESERVE, OR DCR), 1939-40

Troop Quality: Regular

Morale: 8

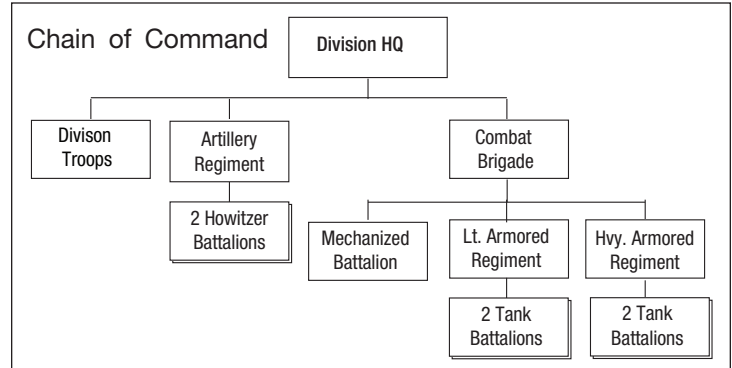
Division Troops	
Headquarters	1 command stand
	1 car
Headquarters Company	1 staff radio Lorraine APC
	1 recon motorcycle infantry stand
Engineer Company	1 command engineer stand
	1 light truck
	2 engineer stands
	1 medium truck

Artillery Regiment	
Headquarters	1 command stand
	1 car
Headquarters Battery	1 <i>medium supply truck</i>
Antitank Battery	1 command infantry stand
	2 47L53 AT guns and crews
	3 light trucks

2 Howitzer Battalions, each	
Headquarters	1 command observation stand
	1 car
Headquarters Battery	1 <i>medium supply truck</i>
3 Firing Batteries, each	1 command infantry stand
	1 light truck
	1 105L19 howitzer and crew (ds)
	1 medium truck

Notes

- 1) There were a total of three DCRs (1st, 2nd, and 3rd) when the Germans attacked, and the 4th DCR was formed as an ad hoc group of armored units during the battle.
- 2) *Tank Battalions*: The divisions consisted of the following tank battalions:
 - i) *1st DCR*: 25th Battalion de Combat de Char (BCC) (H39), 26th BCC (H39), 28th BCC (B1), 37th BCC (B1)
 - ii) *2nd DCR*: 8th BCC (B1), 14th BCC (H39), 15th BCC (B1), 27th BCC (H39)
 - iii) *3rd DCR*: 41st BCC (B1), 42nd BCC (H39), 45th BCC (H39), 49th BCC (B1)
 - iv) *4th DCR*: 2nd BCC (R35), 19th BCC (D2), 24th BCC (R35), 44th BCC (R35), 46th BCC (B1), 47th BCC (B1)



Combat Brigade	
Headquarters	1 command B1 tank
Headquarters Company	1 staff radio Lorraine APC

Mechanized Battalion	
Headquarters	1 command stand
Headquarters and Weapons Company	3 25L72 AT guns and crews
	4 Lorraine APCs
	1 81mm mortar stand (ds)
	1 medium truck
	1 recon motorcycle infantry stand
3 Mechanized Infantry Companies, each	1 recon armored car
	1 command infantry stand
	2 infantry stands
	1 MMG stand
	4 Lorraine APCs

Light Armored Regiment	
Headquarters	1 command H35 tank
Headquarters Company	1 <i>medium supply truck</i>

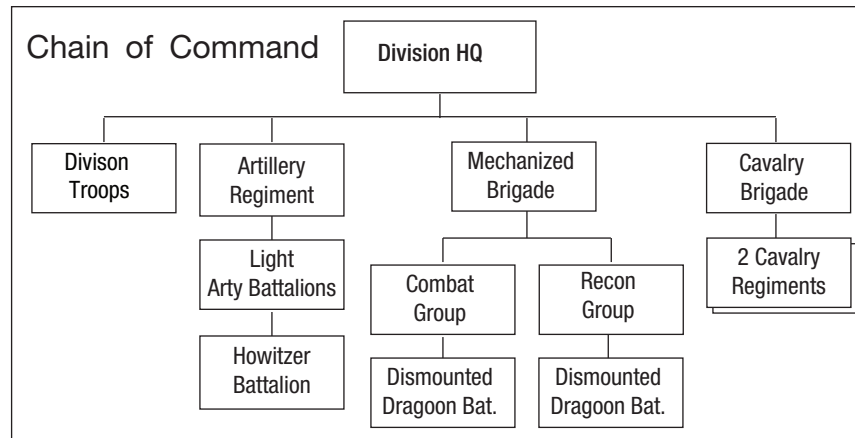
2 Tank Battalions, each	
Headquarters	1 command H39 tank (joint command)
Headquarters Company	1 <i>medium supply truck</i>
3 Companies, each	1 command H39 tank (joint command)
	2 H39 tanks

Heavy Armored Regiment	
Headquarters	1 command B1 tank
Headquarters Company	1 <i>medium supply truck</i>

2 Tank Battalions, each	
Headquarters	1 command B1 tank (joint command)
Headquarters Company	1 <i>medium supply truck</i>
3 Companies, each	1 command B1 tank (joint command)
	1 B1 tank

FRENCH LIGHT CAVALRY DIVISION (DIVISION LÉGÈRE CAVALERIE, OR DLC), 1939-40

Troop Quality: Regular Morale: 8



Division Troops	
Headquarters	1 command stand
	1 car
Headquarters Company	1 staff radio truck
Divisional Engineer Company	1 command engineer stand
	1 light truck
	2 engineer stands
	1 medium truck

Artillery Regiment	
Headquarters	1 command stand
	1 car
Headquarters Battery	1 <i>supply wagon</i>
Antitank Battery	1 mounted command infantry stand
	2 47L53 AT guns and crews
	2 limbers

Light Artillery Battalion	
Headquarters	1 mounted command observation stand
Headquarters Battery	1 <i>supply wagon</i>
3 Firing Batteries, each	1 mounted command infantry stand
	1 75L36 field gun and crew
	1 limber

Howitzer Battalion	
Headquarters	1 mounted command observation stand
Headquarters Battery	1 <i>supply wagon</i>
3 Firing Batteries, each	1 mounted command infantry stand
	1 105L19 howitzer and crew
	1 limber

Mechanized Brigade	
Headquarters	1 command stand
	1 car
Headquarters Company	1 staff radio truck
	1 <i>medium supply truck</i>

Combat Group	
Headquarters	1 command stand
	1 car
Headquarters Company	1 <i>medium supply truck</i>
Tank Company	1 command H35 or H39 tank (joint command)
	2 H35 or H39 tanks
Motorcycle Company	1 command motorcycle infantry stand
	3 motorcycle infantry stands

Dismounted Dragoon Battalion	
Headquarters	1 command stand
	1 car
Headquarters and Weapons Company	1 MMG stands
	1 25L72 AT gun and crew
	2 light trucks
	1 81mm mortar stand (ds)
	1 medium truck
Armored Company	1 command AMR (joint command)
	4 AMR
Rifle Company	1 command infantry stand
	2 infantry stands
	3 Lorraine APCs

FRENCH LIGHT CAVALRY DIVISION (DIVISION LÉGÈRE CAVALERIE, OR DLC), 1939-40

Reconnaissance Group	
Headquarters	1 command stand
	1 car
Headquarters Company	1 <i>medium supply truck</i>
Armored Car Company	1 command armored car
	1 recon armored car
	1 armored car
Motorcycle Company	1 command motorcycle infantry stand
	3 motorcycle infantry stands

Dismounted Dragoon Battalion	
Headquarters	1 command stand
	1 car
Headquarters and Weapons Company	1 MMG stands
	1 25L72 AT gun and crew
	2 light trucks
	1 81mm mortar stand (ds)
	1 medium truck
Armored Company	1 command AMR (joint command)
	4 AMR
Rifle Company	1 command infantry stand
	2 infantry stands
	3 Lorraine APCs

Cavalry Brigade	
Headquarters	1 command stand
	1 car
Headquarters Company	1 staff radio truck
	1 <i>supply wagon</i>

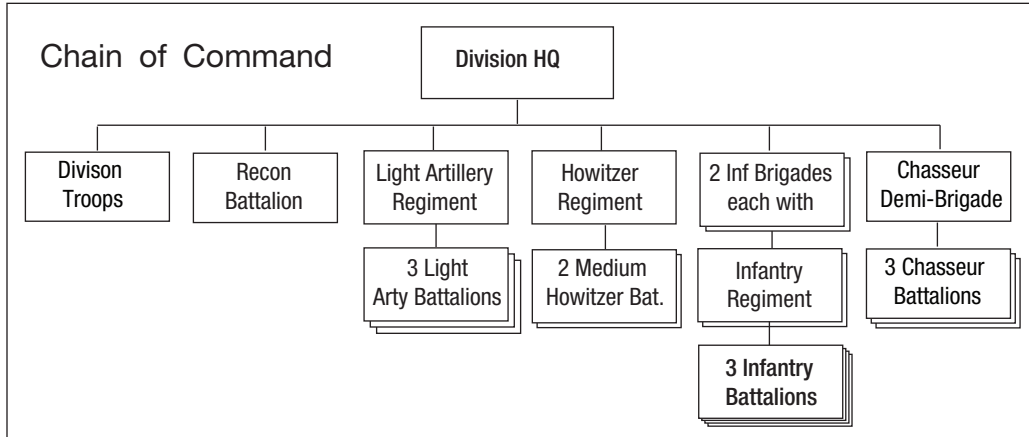
2 Cavalry Regiments (Battalions), each	
Headquarters	1 mounted command stand
Headquarters and Machine Gun Squadron	3 MMG stands
	3 MG carts
	1 25L72 AT gun and crew
	1 limber
4 Cavalry Squadrons, each	1 command cavalry stand
	2 cavalry stands

Notes

1. *Nomenclature:* There were a total of five DLCs (1st through 5th).
2. *Tanks:* The 5th DLC had H39 tanks. The 3rd DLC had a mixture of H35 and H39 tanks. The other divisions had H35 tanks.

FRENCH "A" MOUNTAIN DIVISION, 1939-1940

Troop Quality: Regular Morale: 7



Division Troops	
Headquarters	1 command stand
	1 car
Headquarters Company	1 staff radio truck
Divisional Antitank Company	1 mounted command infantry stand
	2 25L72 AT guns and crews
	2 limbers
Divisional Antiaircraft Company	1 command infantry stand
	3 25L72 AA guns and crws
	4 light trucks
2 Divisional Engineer Companies, each	1 command engineer stand
	2 engineer stands
Pioneer Infantry Company	1 command engineer stand
	1 engineer flamethrower stand

Light Artillery Regiment	
Headquarters	1 command stand
	1 car
Headquarters Battery	1 <i>supply wagon</i>
Antitank Battery	1 command infantry stand
	1 47L53 AT gun and crew
	2 light trucks

3 Light Artillery Battalions, each with	
Headquarters	1 mounted command observation stand
Headquarters Battery	1 <i>supply wagon</i>
3 Firing Batteries, each	1 mounted command infantry stand
	1 76L36 field gun and crew (ds)
	1 limber

Reconnaissance Battalion	
Headquarters	1 command stand
	1 car
Headquarters and Weapons Squadron	1 MMG stand
	1 HMG stand
	25L72 AT gun and crew
	3 light trucks
Cavalry Squadron	1 command cavalry stand
	1 recon cavalry stand
	1 cavalry stand
Motorcycle Squadron	1 motorcycle command infantry stand
	1 recon motorcycle infantry stand
	1 motorcycle infantry stand

Howitzer Regiment	
Headquarters	1 command stand
	1 car
Headquarters Battery	1 <i>supply wagon</i>

2 Medium Howitzer Battalions, each with	
Headquarters	1 mounted command observation stand
Headquarters Battery	1 <i>supply wagon</i>
3 Firing Batteries, each	1 mounted command infantry stand
	1 155L15 howitzer and crew
	1 limber

FRENCH "A" MOUNTAIN DIVISION, 1939-1940

2 Infantry Brigades, each	
Headquarters	1 command stand
	1 car
Headquarters Company	1 staff telephone wagon
	1 <i>supply wagon</i>

Infantry Regiment	
Headquarters	1 command stand
	1 car
Headquarters and Weapons Company	1 staff telephone wagon
	1 25L72 AT gun and crew
	1 limber
	1 <i>supply wagon</i>

3 Infantry Battalions, each with	
Headquarters	1 command stand
Headquarters and Machinegun Company	2 MMG stands
	1 81mm mortar stand (battalion gun)
3 Infantry Companies, each	1 command infantry stand
	3 infantry stands

Chasseur Demi-Brigade	
Headquarters	1 command stand
	1 car
Headquarters and Weapons Company	1 staff telephone wagon
	1 <i>supply wagon</i>

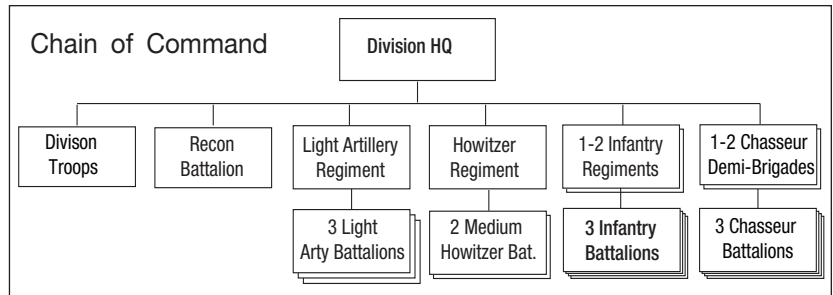
3 Chasseur Battalions, each with	
Headquarters	1 command stand
Headquarters and Machinegun Company	2 MMG stands
	1 81mm mortar stand (ds)
3 Infantry Companies, each	1 command infantry stand
	3 infantry stands

Notes

1. *Nomenclature:* These divisions were numbered as the 27th, 28th, 29th, 30th and 31st Infantry Division.
2. *Organization:* Only the 29th Division was completed to the above establishment. The 27th, 28th, 30th and 31st lacked an AA Company. In addition the 31st Mountain Division was reorganized as an Type "A" Infantry Division when mobilized.
3. *Reorganization:* All remaining divisions were reorganized in the spring of 1940. They lost both brigade headquarters, as well as one of the four infantry regiments/demi-brigades, bringing their organization into line with the rest of the French Army.

FRENCH "B" MOUNTAIN DIVISION, 1939-1940

Troop Quality: Trained
Morale: 5



Division Troops	
Headquarters	1 command stand
	1 car
Headquarters Company	1 staff radio truck
2 Divisional Engineer Companies, each	1 command engineer stand
	2 engineer stands
Pioneer Infantry Company	1 command engineer stand
	1 engineer flamethrower stand

Reconnaissance Battalion	
Headquarters	1 command stand
	1 car
Headquarters and Weapons Squadron	1 MMG stand
	1 HMG stand
	25L72 AT gun and crew
Cavalry Squadron	3 light trucks
	1 command cavalry stand
	1 recon cavalry stand
	1 cavalry stand
Motorcycle Squadron	1 motorcycle command infantry stand
	1 recon motorcycle infantry stand
	1 motorcycle infantry stand

Light Artillery Regiment	
Headquarters	1 command stand
	1 car
Headquarters Battery	1 supply wagon
Antitank Battery	1 command infantry stand
	1 47L53 AT gun and crew
	2 light trucks

3 Light Artillery Battalions, each	
Headquarters	1 mounted command observation stand
Headquarters Battery	1 supply wagon
3 Firing Batteries, each	1 mounted command infantry stand
	1 76L36 field gun and crew (ds)
	1 limber

Notes

- Nomenclature:** These divisions were numbered as the 64th, 65th, and 66th Infantry Division. Each division had a total of three infantry regiments or demi-brigades of infantry attached.
- Antitank Assets:** The 64th Division lacked the Artillery Antitank Battery.
- Engineer Assets:** Both the 65th and 66th Divisions lacked a divisional engineer company

Howitzer Regiment	
Headquarters	1 command stand
	1 car
Headquarters Battery	1 supply wagon

2 Medium Howitzer Battalions, each	
Headquarters	1 mounted command observation stand
Headquarters Battery	1 supply wagon
3 Firing Batteries, each	1 mounted command infantry stand
	1 155L15 howitzer and crew
	1 limber

1-2 Infantry Regiments, each with	
Headquarters	1 command stand
	1 car
Headquarters Company	1 staff telephone wagon
	1 supply wagon

3 Infantry Battalions, each with	
Headquarters	1 command stand
Headquarters and Machinegun Company	2 MMG stands
	1 81mm mortar stand (battalion gun)
3 Infantry Companies, each	1 command infantry stand
	3 infantry stands

1-2 Chasseur Demi-Brigades, each with	
Headquarters	1 command stand
	1 car
Headquarters and Weapons Company	1 staff telephone wagon
	1 supply wagon

3 Chasseur Battalions, each with	
Headquarters	1 command stand
Headquarters and Machinegun Company	2 MMG stands
	1 81mm mortar stand (ds)
3 Infantry Companies, each	1 command infantry stand
	3 infantry stands